

JM Cattle M Company

BLACK HEREFORD & HEREFORD

Annual Bull Sale

Saturday, February 2 • Noon CDT

At Ranch Sale Headquarters in Lawrenceburg, TN





We are thrilled to invite everyone out for the JM Cattle Production Bull & Commercial Female Sale on February 2, 2019. We have brought you another great set of bulls. We continue to strive to make our bulls to meet the needs of the commercial cattlemen as well as any registered operation. If you need calving ease or performance, we have the bull for you. If you need a Hereford or Black Hereford we have the bull for you. If you need horned or polled, we have the bull for you. From Dark Red to Homozygous Black we are striving to bring you the right bull for the right herd. It is our desire to not just sell you a bull that will work but to sell you a bull that is exactly what you need to increase profits for your crossbreeding cattle operation.

We are also selling a nice set of females that are 4 to 8-year olds. These cows are from our Embryo Transplant herd that range from 3n1's to bred. Some of the Hereford cows are designed to be Black Hereford startups that have Black Hereford calves on their sides and exposed to 3F JM Rehab. He is our Angus bull that was our top selection from Three Forks Ranch in 2017! The calves on the side are all sired by Impression and have the look to go with them and be money makers if you chose to keep them as registered cows. We are also selling Straight Hereford bred cows, some will have MM Outcross 1312 ET calves at their sides. 1312 is the full sib to Bellaire's dam from the Barber Ranch operation in Channing, TX. We also are selling strait commercial cows that are black, black-white faced, and red baldies.

Dan Garcia is bringing a nice set of Black Hereford females as well. With a sad heart Dan has chosen to sell some of his herd due to the extreme drought in New Mexico. These young cows and bred heifers will be the only registered Black Hereford females in the sale this spring.

SALE MANAGEMENT



SALE LOCATION

The sale site sits on the south side of Hwy. 64, look for the new facility and signs.

FROM PULASKI head west on Hwy. 64 9 Miles to JM Cattle Company.

FROM LAWRENCEBURG head east on Hwy. 64 to JM Cattle Co.

SALE STAFF

Dustin Layton, <i>Auctioneer</i> <small>TFL#5818, TAL #6690</small>	405-464-2455
Andee Marston	785-250-4449
Bobby Singleton, <i>Marketing Agent</i>	615-708-1034
Jesse Bolin, <i>Special Assignment</i>	417-830-2835
Adam Johnson, <i>Special Assignment</i>	931-703-6081

If you would like to place a bid on any lot(s) but cannot attend the sale, please contact the owners or any member of the sale staff.

HOTEL INFORMATION

Hampton Inn, <i>Pulaski, TN</i>	931-347-9900
Comfort Inn, <i>Pulaski, TN</i>	931-424-1600
Richland Inn, <i>Lawrenceburg, TN</i>	931-762-0061

AIR TRAVEL

Nashville International Airport, *1 1/2 hours*

Huntsville International Airport, *1 hour 20 minutes*

FREE BULL DELIVERY

Free delivery on bull purchases of \$15,000 or more to anywhere in the Continental United States. On bull purchases of \$3,500 or more the first 500 miles from Lawrenceburg, TN, will be free. JM Cattle Co. will do their best to work with everyone on getting the bulls delivered or shipped.

NO FREE DELIVERY ON FEMALES.

HERD HEALTH

Cattle will be accompanied with proper health certificates for immediate shipment.

BULL GUARANTEE

All bulls selling have passed a Breeding Soundness Examination (BSE) within 30 days prior to the sale. If injured within the first breeding season (in case of bulls, making them functionally infertile) we will provide you a satisfactory replacement or issue a credit equal to your purchase, minus the salvage value that may be used toward the purchase of a bull in a future JM Cattle Co. bull sale. Breeding season is defined as the 90-day period following the first turn out of the bulls. We suggest normal management practices in caring for your bulls. This guarantee does not cover bulls that have been poorly managed and cared for, death or a bulls' ability to produce freezable high-quality semen suitable for artificial insemination.

INSURANCE

Your purchases can be insured sale day at the clerk's desk.

ANNOUNCEMENTS

A supplement sheet will be available sale day with up-to-date information. All announcements made sale day from the auction block take precedence over printed matter in the sale catalog.

ACKNOWLEDGEMENTS

DVM Don Malone, <i>Pulaski Vet Clinic</i>	931-363-7575
Wesley Klipfel, <i>Embryologist, Cottage Farm Genetics</i>	931-424-1600
DVM Ashley McDougal, <i>Hamms Creek Reproductive</i>	931-762-0061





1

BF JM CATAPULT 1801 ET

1/19/18	TH 122 711 VICTOR 719T
Bull	CRR 719 CATAPULT 109
HB013409	CRR 4037 ECLIPSE 808
1801	WR CURVE BENDER 8616
HB 90% PB	JM CATTLE LADY A301
Polled	IRON LADY 124T

BW	VW	MILK	M&G	YW	Act. BW
2.8	53	28	54	91	79

Maybe the most deserving bull to ever be Lot 1. This is the Grand Champion Purebred bull at the inaugural Black Hereford Show held at the North American International Livestock Expo. This super complete son of Catapult is good from every angle. Soft in his design and balanced from end to end. We expect big things from this young herd sire. He has the ability to move the breed forward as time progresses. Backed by proven genetics, solid cow family and superior phenotype is the surefire making of breed leading and progressive genetics.



2

JM BLZ IRON JOJO 124T 7101 ET ET

11/3/17	CRR HELTON 980
Bull	F5 JOJO 301
HB011242	WS 410
7101	JN BALDER 6432
HB 76.7%	IRON LADY 124T
Dehorned	G BAR G 502

BW	VW	MILK	M&G	YW	Act. BW
1.3	52	23	49	82	86

We were fortunate to not only have one Grand Champion Bull but two. This hotshot was the Grand Champion Percentage Black Hereford at Louisville back in November. He was just barely a yearling when he won the honor. One look at him and you will see herd sire from end to end. Impeccable in almost every area. Moves as sound as any and still to have that much shape and sweep of rib. Tidy in his front 1/3 make this bull a contender in the years to follow, or just turn him out and make the next generation. Tested for Homozygous Black.

3 JM EMPIRE REVOLUTION 741

4/26/17	JN BALDER 9405
Bull	JO EMPIRE Z631
HB009961	JN BALDEE 631
741	R REVOLUTION 4319
HB 90.65% PB	RC MISS REVOLUTION 228A
Polled	R MISS ADVANCE 1450

BW	WW	MILK	M&G	YW	Act. BW
2.4	42	21	42	68	73

Rugged made and extra solid. His Dam 228A is one of our Favorite Maternal Gems here who has always produced great offspring. Empire has sired some of the Best Bulls in the ABHA! We were fortunate enough to use him last year to bring some solid commercial bulls!

4 JM EMPIRE 1040 7102

11/4/17	JN BALDER 9405
Bull	JO EMPIRE Z631
HB011257	JN BALDEE 631
7102	R WRANGLER 2414
HB 90.65% PB	R MISS WRANGLER 1040
Polled	R MISS COMET 500

BW	WW	MILK	M&G	YW	Act. BW
3.3	42	21	42	68	84

Empire has sired some of the Best Bulls in the ABHA! We were fortunate enough to use him last year to bring some solid commercial bulls!

5 JM EMPIRE 951 795

10/20/17	JN BALDER 9405
Bull	JO EMPIRE Z631
HB011260	JN BALDEE 631
795	HR NAVIGATOR 336
HB 90.65% PB	R MISS NAVIGATE 951
Polled	HR MISS NAVIGATE 340

BW	WW	MILK	M&G	YW	Act. BW
2.4	42	21	42	68	71

Empire has sired some of the Best Bulls in the ABHA! We were fortunate enough to use him last year to bring some solid commercial bulls!

6 JM EMPIRE 2820 796

10/24/17	JN BALDER 9405
Bull	JO EMPIRE Z631
HB013923	JN BALDEE 631
796	HR NAVIGATOR 336
HB 90.65% PB	R MISS NAVIGATE 2820
Polled	GH L1 RUBY ANN 407

BW	WW	MILK	M&G	YW	Act. BW
4.2	43	14	36	73	75

Empire has sired some of the Best Bulls in the ABHA! We were fortunate enough to use him last year to bring some solid commercial bulls!

7 JM RUGER 473 35Z 729

2/26/17	LOEWEN C&L 33N APOLLO A42 ET
Bull	JMCC JO BF APOLLO CREED 473
HB009959	JN BALDEE 1107
729	BOYD WORLDWIDE 9050 ET
HB 69.5%	R&R RITA 35Z
Polled	TRM RITA 080

BW	WW	MILK	M&G	YW	Act. BW
3.8	46	22	45	79	84

Ruger is always been a favorite here! Homozygous Black and Polled! This bull is also from the Heart of the JM Cattle Company Program! R&R Rita 35Z I believe is the best cow Richard has ever sold! His full sib was Reserve champion in NAILE this year!

8 JM HIGHJACKER 747 7121 ET

7/15/17	JO EMPIRE Z631
Bull	JO BLACK JACK 4217
HB013907	JO LADY CLASSIC 217
7121	JN BALDER 4008
HB 76.5%	JN BALDEE 747
Polled	JN BALDEE 525

BW	WW	MILK	M&G	YW	Act. BW
.79	45	24	46	78	70

Long made Black Jack son with extra maternal. This bull is Homozygous Black and Polled with a huge amount of performance. If you're looking for a heifer bull with a stacked pedigree and a lot of growth this is your man.

9 BLZ PK'S FIRST BLAST 576 709

7/7/17	KCF BENNETT HARLAND X337 ET
Bull	JMCC POWDERKEG X337 1217 581
HB011989	JN BALDEE 1217
709	JO BULL ADVANTAGE JN Y413
HB 82%	JMCC MISS RIBEYE Y413 576
Polled	JN BALDEE Y4 ET

BW	WW	MILK	M&G	YW	Act. BW
2.6	46	22	45	78	78

This is the first bull out of JMCC Powderkeg! Powderkeg is the first ABHA National Champion Bull ever sold in our sale in 2016! This bull has all the look and maternal qualities that you will need. Save all the heifers out of this Powerhouse! Tested for Homozygous Black and Polled. Owned by Blazer Farms.

10 JM BIG DAM X51 444B 742

5/1/17	MSU TCF REVOLUTION 4R
Bull	KCF BENNETT REVOLUTION X51
HB009950	KCF MISS PROFICIENT U201
742	HOOVER DAM
HB 75%	JMCC MS HOOVER DAM 444B
Polled	FPH MISS VICKY BOOM P606 Z111

BW	WW	MILK	M&G	YW	Act. BW
2.5	50	21	47	79	63

If you're looking for a total outcross to the ABHA base genetics this is your bull. From Hoover Dam, P606, and X51 this is your ABHA Game Changer!

11 JM BLZ PRESS ON 5152 799

11/1/17	JO BULL ADVANTAGE JN Y413
Bull	JMCC BF IMPRESSION 518
HB011110	YJA BLACK ROSE ABBIE
799	LOEWEN C&L 33N APOLLO A42 ET
HB 81%	JMCC BF LADY 5152
Polled	JM CATTLE LADY A301

BW	WW	MILK	M&G	YW	Act. BW
1.7	46	21	45	87	60

This bull is from the Heart of our Pedigree! This 5152 Son is definitely a Curvebender! Just look at the Birth Weight to Weaning and Yearling Spread out of a First Calf Heifer. His Dam 5152 Sold for \$12,500 as a open heifer in 2016! This bull is from the Heart of our Program! Tested for Homozygous Black and Polled. Owned with Blazer Farms

12 JM FLINGER 4158 439 757

9/17/17	CRR 719 CATAPULT 109
Bull	BF 109 FLINGER 4158 ET
HB013920	BF 2490 EDITH 747 ET
757	JN BALDER 8079
HB 86%	JM CATTLE 8079 RIBEYE 439
Horned	JN BALDEE Y4 ET

BW	WW	MILK	M&G	YW	Act. BW
4.4	53	24	50	90	73

This Flinger son is one of the best in the sale this year! This Horned bull is the kind of massive bull to add Performance to your herd!

13 JM WISH MAKER 400 7105

11/11/17	JN BALDER 9405
Bull	JO EMPIRE Z631
HB011266	JN BALDEE 631
7105	BN RIBSTONE 501
90.65%	R MISS RIBSTONE 400
Polled	R MISS LASS 51

BW	WW	MILK	M&G	YW	Act. BW
2.9	42	21	42	68	81

Empire has sired some of the Best Bulls in the ABHA! We were fortunate enough to use him last year to bring some solid commercial bulls!

14 JM CREED'S 1217 771 ET ET

9/24/17	LOEWEN C&L 33N APOLLO A42 ET
Bull	JMCC JO BF APOLLO CREED 473
HB011241	JN BALDEE 1107
771	JN BALDER 8622
HB 84.5%	JN BALDEE 1217
Polled	JN BALDEE 535

BW	WW	MILK	M&G	YW	Act. BW
2.6	48	20	45	78	65

Another 1217 son that will be a cow maker with a stacked pedigree! Tested for Homozygous Black and Polled.

15 JM APOLLO'S EYE R27C 774

9/25/17	KCF BENNETT REVOLUTION X51
Bull	LOEWEN C&L 33N APOLLO A42 ET
HB011240	HVH OKSANA 4L 33N
774	MYTTY IN FOCUS
HB 75%	R&R MYTTY GIRL
Polled	TRM 5126 1" M LEGAL 9123

BW	WW	MILK	M&G	YW	Act. BW
2.8	43	22	43	75	73

Another Total Outcross to for your Black Hereford Program! Some of the Best Breeders in the Angus and Hereford Worlds are Combined to make this star-studded bull. Flawless Pedigree!

16 JM IMPRESSIVE 571 7103

11/4/17	JO BULL ADVANTAGE JN Y413
Bull	JMCC BF IMPRESSION 518
HB011244	YJA BLACK ROSE ABBIE
7103	H L1 DOMINO 3053 ET
HB 86%	JM CATTLE MISS 3053 1380 571
Polled	R MISS RIBSTONE 1380

BW	WW	MILK	M&G	YW	Act. BW
-0.09	47	21	45	85	64

Calving ease with real world performance. Look at his figures. Recommended for use on heifers.

17 JM APOLLO 518 770

9/24/17	JO BULL ADVANTAGE JN Y413
Bull	JMCC BF IMPRESSION 518
HB013926	YJA BLACK ROSE ABBIE
770	LOEWEN C&L 33N APOLLO A42 ET
HB 86%	JM CATTLE MISS APOLLO 916A 578
Polled	RC MISS HARLAND 916A

BW	WW	MILK	M&G	YW	Act. BW
2.3	52	20	46	95	72

770 is stacked with a Maternal Pedigree you would want to keep all the daughters from this young herd bull!

LOT COLOR KEY

BLACK HEREFORD BULLS

HEREFORD BULLS

COMMERCIAL BULLS

BLACK HEREFORD FEMALES



LOT 7 JM RUGER 473 35Z 729



LOT 8 JM HIGHJACKER 747 7121 ET



LOT 9 BLZ PK'S FIRST BLAST 576 709

LOT 11 JM BLZ PRESS ON 5152 799



18 JM BLACKJACK ON 747 788 ET

10/16/17	JO EMPIRE Z631
Bull	JO BLACK JACK 4217
HB013928	JO LADY CLASSIC 217
788	JN BALDER 4008
HB 76.5%	JN BALDEE 747
Polled	JN BALDEE 525

BW	WW	MILK	M&G	YW	Act. BW
0.79	45	24	46	78	75

Full sib to lot 8! Just a younger version of him.

23 JM ROCKIN 518 ERICA 1802

1/5/18	JO BULL ADVANTAGE JN Y413
Bull	JMCC BF IMPRESSION 518
HB013927	YJA BLACK ROSE ABBIE
1802	KCF BENNETT REVOLUTION X51
HB 86%	JMCC MS ROCKIN X51 584 ET
Polled	STAR P606 ERICA 425P ET

BW	WW	MILK	M&G	YW	Act. BW
2.8	53	21	47	90	81

This Impression son is a Superstar in the Making with Awesome Phenotype for the ABHA! Look at his Pedigree straight Maternal who goes back to some of the greats in the Hereford Breed!

28 BLZ 471 95B 808

2/19/18	BCKST BLACK DYNASTY Z420 ET
Bull	JM CATTLE DYNASTY 918 471ET
HB013083	JN BALDEE 918
808	GRNDVIEW CMR156T VISIONY509 ET
HB 83.625%	WMC Y509 LADY LOVE 95B
Polled	WMC 85W PEARL 56Y

BW	WW	MILK	M&G	YW	Act. BW
3.1	53	24	50	84	107

Another great bull brought to you from Blazer Farms! Mike McFarlin continues to impress everyone with these great genetics and phenotype!

19 JM IRON JACK 124T 793 ET ET

10/16/17	JO EMPIRE Z631
Bull	JO BLACK JACK 4217
HB011258	JO LADY CLASSIC 217
793	JN BALDER 6432
HB 83.2%	IRON LADY 124T
Polled	G BAR G 502

BW	WW	MILK	M&G	YW	Act. BW
1.5	48	24	48	74	80

We can make a strong argument that 124T is one of the best cows to ever be in the ABHA! This Blackjack Son a low birthweight bull is just simply a bull with it all! Tested for Homozygous Black and Polled.

24 JM IMPRESSION 611 1828

2/28/18	JO BULL ADVANTAGE JN Y413
Bull	JMCC BF IMPRESSION 518
HB013924	YJA BLACK ROSE ABBIE
1828	PW VICTOR BOOMER P606
HB 86%	HAPPY QUEEN 611
Polled	HAPPY RUPEDORA QUEEN 328

BW	WW	MILK	M&G	YW	Act. BW
1.9	41	21	41	70	81

Hard to find a P606 with this low of a birthweight EPD!

29 JM FLINGER 413 720

2/15/17	CRR 719 CATAPULT 109
Bull	BF 109 FLINGER 4158 ET
43831488	BF 2490 EDITH 747 ET
720	KCF BENNETT HARLAND X337 ET
Hereford	JM CATTLE REVOLUTION X337 413
Polled	R MISS REVOLUTION 200

CED	BW	WW	YW	MILK	MARB	REA	CHB	Act. BW
1.3	2.8	56	79	29	0.06	0.44	\$107	69

Square hipped and long made Flinger son. Added growth and strong maternal ability. Ranks in the top 15% for MM; top 20% for CW & top 25% for WW.

20 JM CREED'S 8Y 637 1817

2/12/18	LOEWEN C&L 33N APOLLO A42 ET
Bull	JMCC JO BF APOLLO CREED 473
HB013925	JN BALDEE 1107
1817	NJW 73S W18 HOMEGROWN 8Y ET
HB 94.5% PB	BF 8Y HOMEMAID 637
Polled	BF HILTON 364 ET

BW	WW	MILK	M&G	YW	Act. BW
3.6	551	30	55	88	77

This is a very well-made Creed son from a heifer that is moderate in size but very stylish made like him!

25 JM BLZ IMPRESSOR 124T 8102 ET

2/2/18	JO BULL ADVANTAGE JN Y413
Bull	JMCC BF IMPRESSION 518
HB013908	YJA BLACK ROSE ABBIE
8102	JN BALDER 6432
HB 75.2%	IRON LADY 124T
Polled	G BAR G 502

BW	WW	MILK	M&G	YW	Act. BW
2.5	53	22	49	92	71

Another 124T with a very attractive phenotype and great EPDs! Tested for Homozygous Black and Polled! Owned with Blazer Farms

30 JM FLINGER 4R 731

3/1/17	CRR 719 CATAPULT 109
Bull	BF 109 FLINGER 4158 ET
43831466	BF 2490 EDITH 747 ET
731	MSU TCF REVOLUTION 4R
Hereford	CS 4R RONDA 25Y
Polled	CS PURE RONDA 47W

CED	BW	WW	YW	MILK	MARB	REA	CHB	Act. BW
-2.6	4.5	55	87	25	-0.10	0.53	\$108	85

Strong carcass quality in an eye appealing package. Ranks in the top 15% for REA; top 25% for CHB.

21 JM REVOLUTION 692 1822

2/14/18	JO BULL ADVANTAGE JN Y413
Bull	JMCC BF IMPRESSION 518
HB013933	YJA BLACK ROSE ABBIE
1822	HR REVOLUTION 4159
HB 86%	R MISS REVOLUTION 692
Polled	R MISS DOMINO 3015

BW	WW	MILK	M&G	YW	Act. BW
2.6	54	22	48	93	81

Breed leading EPD's for the real world. Square hipped and great in his design.

26 JM IMPRESSION 406 1834

3/11/18	JO BULL ADVANTAGE JN Y413
Bull	JMCC BF IMPRESSION 518
HB013921	YJA BLACK ROSE ABBIE
1834	MCR REVOLUTIONS DOMINO 1211 ET
HB 86%	JM CATTLE NEON REV 1211 406
Polled	R MISS NEON 781

BW	WW	MILK	M&G	YW	Act. BW
2.4	54	20	47	92	83

Impression son with added pounds at weaning and yearling.

31 JM NATURAL STUD 324A 735

3/15/17	NJW 73S W18 HOMEGROWN 8Y ET
Bull	TMG BY ALL NATURAL 4001 ET
43831497	BF HEIDI 703
735	R REVOLUTION 4319
Hereford	RC MISS REVOLUTION 324A
Polled	R MISS WRANGLER 3170

CED	BW	WW	YW	MILK	MARB	REA	CHB	Act. BW
2.6	3.2	58	93	29	0.02	0.58	\$108	72

Amazing growth in a big hipped, stout made bull. Ranks in the top 10% for CW & REA; top 15% for MM; top 20% for WW, YW & top 25% for CHB.

22 JM BLZ HARD CORE 124T 8103 ET

2/2/18	JO BULL ADVANTAGE JN Y413
Bull	JMCC BF IMPRESSION 518
HB013909	YJA BLACK ROSE ABBIE
8103	JN BALDER 6432
HB 75.2%	IRON LADY 124T
Polled	G BAR G 502

BW	WW	MILK	M&G	YW	Act. BW
2.5	53	22	49	92	69

Hard Core describes this bull the best! Definitely one you should have marked in your catalogue! When you examine this bull, you will appreciate what he has to offer the Black Hereford World! Hard Core is the answer for your Black Hereford Herd! Tested for Homozygous Black and Polled. Owned with Blazer Farms.

27 JM DAM OLE FLINGER 1838

3/31/18	CRR 719 CATAPULT 109
Bull	BF 109 FLINGER 4158 ET
HB013922	BF 2490 EDITH 747 ET
1838	HOOVER DAM
HB 75%	JMCC MS HOOVER DAM 439B
Polled	FPH MISS VICKY X76 RIBEYE Z85

BW	WW	MILK	M&G	YW	Act. BW
2.1	56	23	55	93	87

Total outcross bull that you will want to look hard at! This bull has it all! 75% bull that is low birthweight pedigree out of Flinger and Hoover Dam! Flinger has been the go-to Heifer Bull and Burns Farms and JM Cattle for the last few years!

32 JM STONE COLD A42 2060 701

1/1/17	KCF BENNETT REVOLUTION X51
Bull	LOEWEN C&L 33N APOLLO A42 ET
43857470	HVH OKSANA 4L 33N
701	BN RIBSTONE 501
Hereford	R MISS RIBSTONE 2060
Polled	R MISS GENERAL 452

CED	BW	WW	YW	MILK	MARB	REA	CHB	Act. BW
11	1.3	40	82	21	0.22	0.49	\$116	62

Calving ease and carcass quality in one shot. Recommended for heifers. Ranks in the top 5% for CED; top 10% for CHB; top 15% for BW & top 25% for REA.

LOT COLOR KEY

BLACK HEREFORD BULLS

HEREFORD BULLS

COMMERCIAL BULLS

BLACK HEREFORD FEMALES



LOT 21 JM REVOLUTION 692 1822



LOT 29 JM FLINGER 413 720



LOT 22 JM BLZ HARD CORE 124T 8103 ET



LOT 31 JM NATURAL STUD 324A 735



LOT 23 JM ROCKIN 518 ERICA 1802

33 JM CW ODEN 602

2/15/17 KCF BENNETT REVOLUTION X51
Bull LOEWEN C&L 33N APOLLO A42 ET
 43974098 HVH OKSANA 4L 33N
 602 R REVOLUTION 4319
Hereford RC MISS REVOLUTION 1112A
 Polled R MISS WRANGLER 2800

Solid made that will add performance and growth.

38 JM FLINGER Y445 433 776

9/25/17 CRR 719 CATAPULT 109
Bull BF 109 FLINGER 4158 ET
 43971187 BF 2490 EDITH 747 ET
 776 KCF BENNETT REVOLUTION Y445
Hereford JM CATTLE MISS Y445 2800 433
 Polled R MISS WRANGLER 2800

CED	BW	WW	YW	MILK	MARB	REA	CHB	Act. BW
3.2	2.8	58	90	25	-0.02	0.47	\$105	61

Proven performance and maternal strength.

43 JM HX BLACK HEREFORD 752

9/1/17 CRR 719 CATAPULT 109
Bull BF 109 FLINGER 4158 ET
 BF 2490 EDITH 747 ET
 752 TH 122 711 VICTOR 719T
Commercial GZF B108 IMPRESSION
 Polled GZF Z117 BIG MOMMA

Act. BW
70

752 is awesome heifer bull that is only Red in color but a Black Hereford at Heart! His dam B108 was the high seller at the ABHA National Heifer sale back in 2015 from Ground Zero Farms! Richard and I purchased this outcross female who is an own daughter of 719T!

34 JM ALL NAT 823A 787

10/16/17 NJW 73S W18 HOMEGROWN 8Y ET
Bull TMG 8Y ALL NATURAL 4001 ET
 43971167 BF HEIDI 703
 787 R REVOLUTION 4319
Hereford RC MISS REVOLUTION 823A
 Polled R MISS REVOLUTION 3220

CED	BW	WW	YW	MILK	MARB	REA	CHB	Act. BW
2.9	2.5	55	85	28	0.05	0.57	\$107	70

Eye appealing bull that is deep ribbed and packed with muscle.

39 JM FLINGER 427 780

10/1/17 CRR 719 CATAPULT 109
Bull BF 109 FLINGER 4158 ET
 43971199 BF 2490 EDITH 747 ET
 780 KCF BENNETT REVOLUTION Y445
Hereford JM CATTLE MISS Y455 820 427
 Polled R MISS LEGEND 820

CED	BW	WW	YW	MILK	MARB	REA	CHB	Act. BW
4.7	1.9	58	87	23	0.05	0.48	\$101	66

Calving ease with solid growth and performance. Recommended for use on heifers.

44 JM HX BLACK HEREFORD 1820

2/13/18 LOEWEN C&L 33N APOLLO A42 ET
Bull JMCC JO BF APOLLO CREED 473
 JN BALDEE 1107
 1820 TRIPLE L 0901
Commercial YJA BLACK ROSE ABBIE
 Polled TRIPLE L X216

Act. BW
71

1820 was almost our next Herd Bull but he came out Red instead of Black! He is a maternal brother to Impression and a son of Creed! What a letdown for us but a great pick up for a smart commercial breeder who wants a Heifer bull with add performance!

35 JM NATURAL STUD 102A 777

9/24/17 NJW 73S W18 HOMEGROWN 8Y ET
Bull TMG 8Y ALL NATURAL 4001 ET
 43867762 BF HEIDI 703
 777 KCF BENNETT HARLAND X337 ET
Hereford RC MISS HARLAND 102A
 Polled R MISS RIBSTONE 1880

CED	BW	WW	YW	MILK	MARB	REA	CHB	Act. BW
3.5	2.8	49	81	34	0.07	0.44	\$109	72

Excellent from end to end that will add pounds to his calves.

40 JM APOLLO Y445 420 6107

12/6/16 KCF BENNETT REVOLUTION X51
Bull LOEWEN C&L 33N APOLLO A42 ET
 43857708 HVH OKSANA 4L 33N
 6107 KCF BENNETT REVOLUTION Y445
Hereford JM CATTLE MISS Y445 740 420
 Polled R MISS DOMINO 740

CED	BW	WW	YW	MILK	MARB	REA	CHB	Act. BW
7.6	1.9	58	98	47	0.15	0.53	\$106	62

Surefire calving ease and curve bending growth. Recommended for use on heifers.

45 DETERS BCC ROCKETTE 5105

3/2/15 BAR Z BALDER 567
Cow DETERS ROCK 2738
 HB007802 DBH BUD'S GIRL 7309
 5105 BAR Z LEWIS 453
HB 88% PB BCC LADY 105
 Polled BOTKINS VICTORIA 3007-5011

BW	WW	MILK	M&G	YW
5.07	47	23	47	71

Maternal giant.
 P.E. 11/1/17 - 2/2/18 to JMCC JO BF APOLLO CREED 473
 Consigned by Dan Garcia

36 JM ALL HARLAND 97A 759

9/20/17 NJW 73S W18 HOMEGROWN 8Y ET
Bull TMG 8Y ALL NATURAL 4001 ET
 43971178 BF HEIDI 703
 759 KCF BENNETT HARLAND X337 ET
Hereford RC MISS HARLAND 97A
 Polled R MISS RIBSTONE 1380

CED	BW	WW	YW	MILK	MARB	REA	CHB	Act. BW
-0.1	4.6	54	96	31	0.07	0.44	\$109	60

Solid made bull that is loaded with muscle and eye appeal.

41 JM REVOLUTION 4158 X337 1825

2/9/18 CRR 719 CATAPULT 109
Bull BF 109 FLINGER 4158 ET
 43971207 BF 2490 EDITH 747 ET
 1825 KCF BENNETT HARLAND X337 ET
Hereford JM CATTLE REVOLUTION X337 413
 Polled R MISS REVOLUTION 200

CED	BW	WW	YW	MILK	MARB	REA	CHB	Act. BW
-0.1	3.7	57	88	29	0.03	0.40	\$104	75

No miss pedigree with eye appeal and balanced design.

46 JMCC MISS GRACE Y413 781 621

3/9/16 JN BALDER 8622
Cow JO BULL ADVANTAGE JN Y413
 HB008103 JN BALDEE 413
 621 UPS NEON 7024
HB 84% R MISS NEON 781
 Polled R MISS COMET 893

BW	WW	MILK	M&G	YW
4.9	46	22	46	74

A female that out produces herself every year.
 P.E. 11/1/17 - 2/2/18 to JMCC JO BF APOLLO CREED 473
 Consigned by Dan Garcia

37 JM ALL ADVANCE 2920 747

8/31/17 NJW 73S W18 HOMEGROWN 8Y ET
Bull TMG 8Y ALL NATURAL 4001 ET
 43833710 BF HEIDI 703
 747 HR ADVANCER 65
Hereford R MISS ADVANCE 2920
 Polled R MISS FELT 477

CED	BW	WW	YW	MILK	MARB	REA	CHB	Act. BW
-0.5	3.8	47	80	30	-0.01	0.36	\$106	71

Exceptional growth in a square made, stout package.

42 JM HX BLACK HEREFORD 760

9/20/17 NJW 73S W18 HOMEGROWN 8Y ET
Bull TMG 8Y ALL NATURAL 4001 ET
 BF HEIDI 703
 760 KCF BENNETT ABSOLUTE
Commercial R&R ABSOLUTE 122L
 Polled TRM 5126 1" M LEGAL 9123

Act. BW
75

They will not get any better than this bull for performance and phenotype in my opinion! Too Bad he's Red or else Money couldn't buy this bull! 760 is out of some of the greats in the Hereford Business! Our loss is your gain on 760 who is possibly the Best Commercial bull in the sale!

47 JO 423 DOMINO 800M 744

2/25/17 JO BULL ADVANTAGE JN Y413
Cow JO BOOM ADVANTAGE 3008
 HB010983 JO MISS CURVE FORK 0008
 744 UPS DOMINO 3027
HB 88% PB JO LADY DOMINO 3027 423
 Polled JO LADY CLASSIC 215

BW	WW	MILK	M&G	YW
2.3	48	23	47	82

Calf raising machine.
 P.E. 7/7/18 - 8/15/18 to JMCC BF IMPRESSION 518
 Checked safe in calf.
 Consigned by Dan Garcia

48 **JO 102 BOOMER GIRL 728**

2/8/17 JO BULL ADVANTAGE JN Y413
 Cow JO BOOM ADVANTAGE 3008
 HB010971 JO MISS CURVE FORK 0008
 728 MOHICAN UNITED 203U
 HB 89.5% PB JO LADY RED 102
 Polled ALLEN 4P MISS PEPPERMINT 301W

BW	WW	MILK	M&G	YW
4.1	43	20	42	78

Bred heifer with a ton of future.
 P.E. 5/17/18 - 7/5/18 to JN BALDER C187
 Checked safe in calf.
 Consigned by Dan Garcia

49 **JO 949 ADVANTAGE GIRL 723**

2/3/17 JO BULL ADVANTAGE JN Y413
 Cow JO BOOM ADVANTAGE 3008
 HB010966 JO MISS CURVE FORK 0008
 723 CTY BONANZA 483P
 HB 89.5% PB RB MISS 949W
 Polled RB MISS 635

BW	WW	MILK	M&G	YW
4.5	46	23	46	79

Proven genetics with balanced EPD's.
 P.E. 5/17/18 - 7/5/18 to JN BALDER C187
 Checked safe in calf.
 Consigned by Dan Garcia

50 **NM BLACKEE 1681**

8/10/16 JN BALDER 8622
 Cow JO MONEY TRAIN JN Z928
 HB010134 JN BALDEE 928
 1681 WR CURVE BENDER 8616
 HB 80% TRIPLE L 0036
 Polled D BART 953

BW	WW	MILK	M&G	YW
2.5	46	21	44	74

Solid producers with strong maternal quality.
 P.E. 5/17/18 - 7/5/18 to JN BALDER C187
 Checked safe in calf.
 Consigned by Dan Garcia



LOT 34 JM ALL NAT 823A 787



LOT 36 JM ALL HARLAND 97A 759



LOT 42 JM HX Black Hereford 760



LOT 35 JM NATURAL STUD 102A 777

We appreciate your support!

Registered & Commercial Females

LOTS 51-83



LOT 61

Selling the commercial females in groups of 2-3 head. If registration papers are available, they can be transferred for \$50.

Lot	Tattoo	DOB	Reg	Sire	P.E. Date	P.E. Sire	Calf Tattoo	Calf Sex	Calf DOB	Calf Sire
51	1591	4-6-11	43204594	HH Advance 8181U	11-15/2-1-19	3F JM Rehab 5658	8109	BC	11-10-18	JMCC BF Impression 518
52	2581	4-17-11	43204513	R Advance 2032	11-15/2-1-19	3F JM Rehab 5658	1	BC	11-24-18	JMCC BF Impression 518
53	400	3-24-10	43107017	BN Ribstone 501	Due Jan. '19	Impression 518				
54	820	4-1-10	43107061	NS Samson ET 658	Due Jan. '19	Impression 518				
55	1040	4-2-10	43106780	R Wrangler 2414	11-15/2-1-19	3F JM Rehab 5658	8113	BC	11-20-18	JMCC BF Impression 518
56	1110	4-3-10	43106787	HR Advancer 65	11-15/2-1-19	3F JM Rehab 5658	8116	BC	11-20-18	JMCC BF Impression 518
57	1220	4-3-10	43106798	HR Navigator 336	11-15/2-1-19	3F JM Rehab 5658	8123	HC	11-24-18	JMCC BF Impression 518
58	1380	4-5-10	43106814	BN Ribstone 501	11-15/2-1-19	3F JM Rehab 5658	8127	BC	12-13-18	JMCC BF Impression 518
59	1610	4-7-10	43106838	N 9126J Domino 514	11-15/2-1-19	3F JM Rehab 5658	8110	HC	11-11-18	JMCC BF Impression 518
60	1880	4-10-10	43106867	BN Ribstone 501	11-15/2-1-19	3F JM Rehab 5658	8124	HC	11-24-18	JMCC BF Impression 518
61	2060	4-12-10	43106883	BN Ribstone 501	11-15/2-1-19	3F JM Rehab 5658	8117	BC	11-20-18	JMCC BF Impression 518
62	2380	4-17-10	43106762	JDH 100M Boulder 11P	11-15/2-1-19	3F JM Rehab 5658	8130	HC	12-22-18	JMCC BF Impression 518
63	2510	4-19-10	43106929	HR Navigator 336	11-15/2-1-19	3F JM Rehab 5658	8135	HC	12-27-18	JMCC BF Impression 518
64	2590	4-21-10	43106937	HR Navigator 336	11-15/2-1-19	3F JM Rehab 5658	8129	BC	12-22-18	JMCC BF Impression 518
65	2810	4-28-10	43106958	BN Ribstone 501	11-15/2-1-19	3F JM Rehab 5658	8104	HC	11-1-18	JMCC BF Impression 518
66	2820	4-29-10	43106959	HR Navigator 336	11-15/2-1-19	3F JM Rehab 5658	8107	HC	11-1-18	JMCC BF Impression 518
67	1810	4-10-10	43106860	HR Advancer 65	11-15/2-1-19	3F JM Rehab 5658	8108	HC	11-9-18	MM Outcross 1312
68	2920	5-1-10	43106970	HR Advancer 65	11-15/2-1-19	3F JM Rehab 5658	8108	HC	11-9-18	MM Outcross 1312
69	487	8-22-14	43537467	KCF Bennett RevolutionY445	11-15/2-1-19	3F JM Rehab 5658	8086	BC	11-8-18	MM Outcross 1312
70	022	3-8-12	43307086	MSU TCF Revolution 4R	11-15/2-1-19	3F JM Rehab 5658	Ret. ET Calf			
71	951	3-27-11	43204854	HR Navigator 336	11-15/2-1-19	3F JM Rehab 5658	Ret. ET Calf			
72	2800	4-28-10	43106957	R Wrangler 2414	11-15/2-1-19	3F JM Rehab 5658	Ret. ET Calf			
73	2900	4-30-10	43106968	K&B Sentinel 8013U	11-15/2-1-19	3F JM Rehab 5658	Ret. ET Calf			
74	29Y	5-6 yrs.		Commercial	11-15/2-1-19	3F JM Rehab 5658	8112	BC	11-20-18	JMCC BF Impression 518
75	MMJM	5-6 yrs.		Commercial	11-15/2-1-19	3F JM Rehab 5658	8106	HC	11-10-18	JMCC BF Impression 518
76	48Z	5-6 yrs.		Commercial	11-15/2-1-19	3F JM Rehab 5658	8125	BC	11-26-18	JMCC BF Impression 518
77	86ARC	5-6 yrs.		Commercial	Due Jan. '19	Impression 518				
78	856	5-6 yrs.		Commercial	11-15/2-1-19	3F JM Rehab 5658	8114	BC	11-20-18	JMCC BF Impression 518
79	958	5-6 yrs.		Commercial	11-15/2-1-19	3F JM Rehab 5658	Ret. ET Calf			
80	8392	5-6 yrs.		Commercial	11-15/2-1-19	3F JM Rehab 5658	Ret. ET Calf			
81	C5081	10-23-15		C Harland Too	Due Spring '19	KRM Y310 Brute Y449 B12				
82	24	3-10-16		Commercial Hereford	Due Spring '19	TMG 8Y All Natural 4001				
83	011	3-25-15		Commercial Hereford	Due Spring '19	KRM Y310 Brute Y449 B12				

NOTES

REFERENCE SIREs



JMCC JO BF APOLLO CREED 473

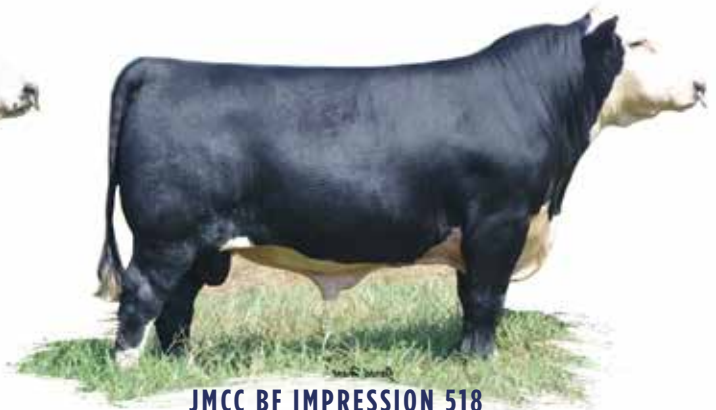
Purebred • Black Hereford • HB006685 • 12/20/2014

SIRE: Loewen C&L 33N Apollo A42 ET

DAM: JN Baldee 1107

OWNED WITH: Jo Bulls and Burns Farms

BW	WW	MILK	M&G	YW
3	51	23	48	102



JMCC BF IMPRESSION 518

Purebred • Black Hereford • HB006690 • 12/20/2014

SIRE: Jo Bull Advantage JN Y413

DAM: YJA Black Rose Abbie

OWNED WITH: Burns Farms

BW	WW	MILK	M&G	YW
1	50	22	47	84



BF 109 FLINGER 4158 ET

Hereford • P43553460 • 9/11/2014

SIRE: CRR 719 Catapult 109

DAM: BF 2490 Edith 747 ET

CED	BW	WW	YW	MILK	MARB	REA	CHB
3.5	1.8	52	73	29	-0.10	0.43	\$100



3F JM REHAB 5658

Angus • *18374551 • 10/15/2015

SIRE: Deer Valley C C & 7 2123

DAM: V N A R Black Bess 9056

CED	BW	WW	YW	MILK	MARB	REA	\$B
12	-2	73	120	25	0.64	0.56	\$150



DUSTIN N. LAYTON
PO BOX 31684
Edmond, Oklahoma 73003
www.laytonauction.com

Two champions sell!

2018 NAILE Grand Champion Purebred Bull



BF JM CATAPULT 1801 ET
ABHA Reg: HB013409 • Polled
BW: 2.8 WW: 53 Milk: 28 M&G: 55 YW: 92

2018 NAILE Grand Champion Percentage Bull



JM BLZ IRON JOJO 124T 7101 ET ET
ABHA Reg: HB011242 • Dehorned
BW: 1.3 WW: 52 Milk: 23 M&G: 49 YW: 82